

# Intelligent AI-Enabled Energy-Efficient IoT Communication Architecture for Next-Generation Wireless Sensor Networks

A.Velliangiri

*Department of ECE, K.S.R.College of Engineering.*

## KEYWORDS:

Internet of Things,  
Wireless Sensor Networks,  
Artificial Intelligence,  
Energy Efficiency,  
Intelligent Routing,  
Edge Computing,  
Machine Learning,  
Adaptive Communication,  
Smart Networks,  
Low-Power IoT

## ARTICLE HISTORY:

Submitted : 14.01.2026  
Revised : 19.02.2026  
Accepted : 10.03.2026

## DOI:

<https://doi.org/10.17051/IJECE/01.01.22>

## ABSTRACT

The fast proliferation of Internet of Things (IoT) ecosystems and wireless sensor networks (WSNs) has also posed a real challenge in terms of energy efficiency, reliability of communication, scalability as well as the intelligent management of resources. Conventional WSN communication protocols tend to use too much energy, are restricted to route static routing, and network bandwidth is saturated, leading to diminished operational lifetime when using dynamic network environments. In this paper, an Intelligent AI-Supported Energy-Efficient IoT Communication Architecture of next-generation wireless sensor networks is suggested to overcome these constraints. The suggested framework combines artificial intelligence-sustained adaptive routing, smart clustering, edge-assisted information processing, and energy-sensitive communication schemes to enhance the network performance and reduce the energy consumption. An example of this is a lightweight machine learning-based decision engine that dynamically chooses the best communication paths, cluster heads considering the parameters of residual energy, node density, transmission cost, and traffic conditions. Also, adaptive scheduling of sleep and edge level processing are also added to minimize redundant transmissions and communication overhead. Simulation-based performance analysis was used to evaluate the proposed architecture based on metrics such as energy consumption, throughput, ratio of successful packet delivery, lifespan of the network and end to end delay. The use of simulations shows that the given framework ensures much higher communication efficiency, scalability, and network resilience than traditional routing protocols do. The architecture proposed provides a scalable and intelligent communication solution that can be used in smart cities, industrial and health care monitoring, environmental sensing, and intelligent wireless communication applications in the future.

**Author's e-mail:** velliangiria@gmail.com

**How to cite this article:** Velliangiri A, Intelligent AI-Enabled Energy-Efficient IoT Communication Architecture for Next-Generation Wireless Sensor Networks, IAECES Journal of Electronics and Communication Engineering, Vol. 1, No. 1, 2026 (pp.172-179).

## 1. INTRODUCTION

Internet of Things (IoT) has become a disruptive technology that allows smart interconnection between smart devices, sensors, and communication systems in healthcare, agricultural, transportation, and industrial automation applications, and smart cities [1], [2]. The most important part of the communication infrastructure of the IoT environment is the Wireless Sensor Networks [WSNs] that provide distributed sensing, real-time tracking, and autonomous data exchange between sensor nodes [3]. Although notwithstanding the swift development of IoT

technologies, energy efficiency is one of the key issues with the large-scale WSN implementations. Sensor nodes are usually powered by small batteries, have limited processing power, and have limited communication bandwidth [4]. Perpetual sensing, routing and wireless transmission are highly energy consuming and therefore lead to short network life and poor communication is achieved [5]. In addition, the classic routing tools that include LEACH, PEGASIS and TEEN are based on static communication tools, which are inefficient in changing IoT conditions [6], [7]. The latest studies have indicated that the methods of Artificial Intelligence (AI) and Machine Learning (ML)

may enhance the efficiency of the communication process by introducing adaptive routing, intelligent clustering, prediction of congestions, and scheduling of communication based on energy considerations [8]. Likewise, edge computing facilitates local processing and minimizes communication during overhead reduction by undertaking smart decision-making in the area around the sensing environment [9]. Nevertheless, the current AI-based IoT communications still have drawbacks, including a large degree of computational complexity, scaling concerns, augmented training, and lack of edge intelligence-to-energy-mindful routing solutions [10]. Hence, the intelligent communication architectures that are lightweight and scalable to resource-constrained wireless sensor networks are needed.

This paper suggests an Intelligent AI-powered Energy-Efficient IoT Communication Architecture to the next generation wireless sensor networks. The proposed structure incorporates AI-assisted adaptive routing, smart selection of cluster heads, edge-assisted processing and adaptive sleep scheduling to enhance the reliability of communication at the minimum energy usage. A lightweight decision engine based on machine learning automatically chooses the best communication paths, depending on the variables of residual energy, cost of communication, node density and traffic conditions.

This article has significant contributions which are as follows:

1. Creation of a smart IoT communication structure that can be powered with AI.
2. Adaptive routing and clustering schemes that are intelligent.
3. Architecture of an energy-sensitive communication architecture with sleep schedules.
4. Ability to include edge-assisted processing to achieve less communication overhead.
5. Comparison based on simulation-based performance evaluation.

## 2. RELATED WORK

Communication in IoT-enabled wireless sensor networks (WSNs) has a long history of energy-saving research

because of the small power supply of sensor nodes and growing scale demands of IoT services [11]. A number of routing algorithms and smart communication models have been suggested to minimize energy usage and enhance reliability of communication. One of the most popular cluster based routing protocols that enhances efficiency in energy consumption is Low-Energy Adaptive Clustering Hierarchy (LEACH) [12] which selects cluster heads at random to boost energy efficiency. LEACH can increase the lifetime of the network, but the constant cluster interesting and fixed routing decrease scalability in large-scale deployments. Chain-based communication was proposed through Power-Efficient Gathering in Sensor Information Systems (PEGASIS) to reduce distance traversed during transmission among sensor nodes [13]. PEGASIS is more effective in the consumption of energy compared to LEACH but it is characterized by longer communication delay and lacks flexibility.

TEEN (Threshold-sensitive Energy Efficient sensor Network protocol) was created to support time-sensitive sensing applications based on threshold-based data transmission [14]. TEEN minimizes unnecessary communication overhead, but it shows poor performance when working with dynamic traffic and different network conditions. Recently, Artificial Intelligence (AI) and the use of Machine Learning (ML)-based routing algorithms to support intelligent IoT communication have been investigated [15]. Intelligent routing with AI enhances adaptive routing, congestion routing, and energy-aware routing. The techniques of reinforcement learning also optimize routing choices in the dynamic network conditions. Another solution that has been found to greatly decrease communication overhead and latency in IoT systems is edge computing [16]. Localized data filtering, intelligent traffic management, and less reliance on clouds are supported by edge-assisted processing. In spite of these developments, the current AI-supported communication systems continue to experience issues such as excessive computational complexity, scalability, intensive training, and lack of coordination between edge intelligence and energy-sensitive routing schemes [17]. Thus, intelligent communication architectures, which are lightweight and scalable, are needed in next generation wireless sensor networks.

Table 1. Comparative Analysis of Existing Approaches

Protocol/Method	Technique	Advantages	Limitations
LEACH	Cluster-based routing	Energy-efficient	Poor scalability
PEGASIS	Chain-based routing	Reduced transmission energy	Increased delay
TEEN	Threshold-based communication	Reduced redundant transmission	Limited adaptability
AI Routing Models	Intelligent routing	Adaptive communication	High computational cost
Edge-Based IoT	Local processing	Reduced latency	Resource management issues

## 3. PROPOSED INTELLIGENT AI-ENABLED COMMUNICATION ARCHITECTURE

The Intelligent AI-Enabled Energy-Efficient IoT Communication Architecture is a proposed solution that aims to offer scalable, adaptive and energy-efficient communication to the next generation wireless sensor

networks (WSNs). The framework combines the artificial intelligence-aided routing, edge capable processing, adaptive clustering, and energy-aware communication mechanisms into enhancing network performance and extending the operational life span. It is proposed to be designed in four layers which are Sensor Layer, Edge Intelligence Layer, Intelligent Communication Layer and Cloud and Management Layer.

### 3.1 Architecture Overview

The presented framework provides the use of a layered communication model to assist in the transmission of the intelligent data and effective management of resources in the world of IoT-enabled WSN. The communication workflow is optimized by using artificial intelligence techniques to achieve maximum routing decisions, less congestion, better packet delivery, and less energy use. The architecture constantly checks the conditions in the network (residual energy, communication delay, node density, and traffic load) and dynamically allocates the communication paths. Fig. 1 shows the general layout of the proposed system architecture.

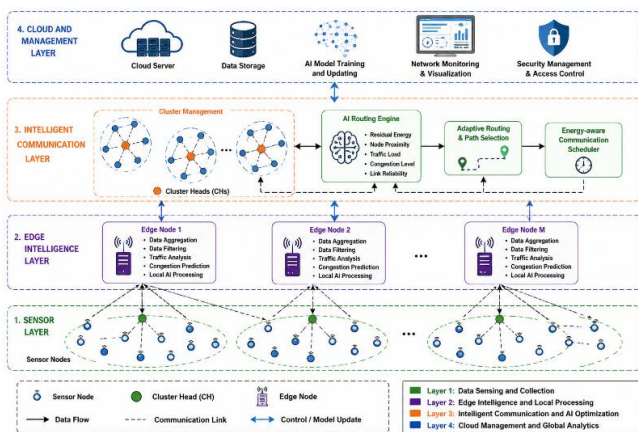


Fig. 1. Overall Proposed Intelligent AI-Enabled Energy-Efficient IoT Communication Architecture for Next-Generation Wireless Sensor Networks

### 3.2 Sensor Layer

The sensor layer comprises distributed sensing nodes which monitor the environment and collect data. Depending on the intended use, the sensor nodes will make real-time measurements of things like temperature, humidity, pressure, vibration, and motion. Some preprocessing functions, such as filtering and temporary buffering are done at the start of transmission. The sensor nodes have a low power supply and computation ability, so the proposed architecture has energy sensitive communication control and variable sleep planning features to decrease idle power wastage and enhance network sustenance. The sensor nodes exchange information with the neighboring ones and relay aggregated

message to the edge processing units by adapting the routing routes.

### 3.3 Edge Intelligence Layer

The edge intelligence layer brings into the scene intelligent processing that is local to the sensing environment. Edge nodes carry out traffic analysis, data aggregation, prediction of congestion, and the economy of communication based on lightweight AI-assisted processing models. The edge layer minimizes unnecessary transmission of cloud by filtering packets locally and temporary analytics and then transmitting information to upper communication layers. This greatly reduces communication latency, bandwidth usage, and general energy use. There are also enhanced scalability in communication and real-time responsiveness of the network with the help of edge processing.

### 3.4 Intelligent Communication Layer

The smart communication layer handles the adaptive routing, the cluster formation and the energy efficient communication scheduling. The framework proposed has the capacity of dynamically choosing the best communication routes depending on the remaining node energy, the distance of communication, the load of traffic, the likelihood of congestion and the reliability of sending packets. Adaptive cluster head selection is used to equalize communication load between sensor nodes and avoid overuse of energy by communication paths that are frequently used. The communication layer keeps routing decisions abreast with real time network conditions to enhance communication efficiency and minimize packet loss. The routing and communication optimization mechanism can be depicted as a detailed workflow as shown in Fig. 2.

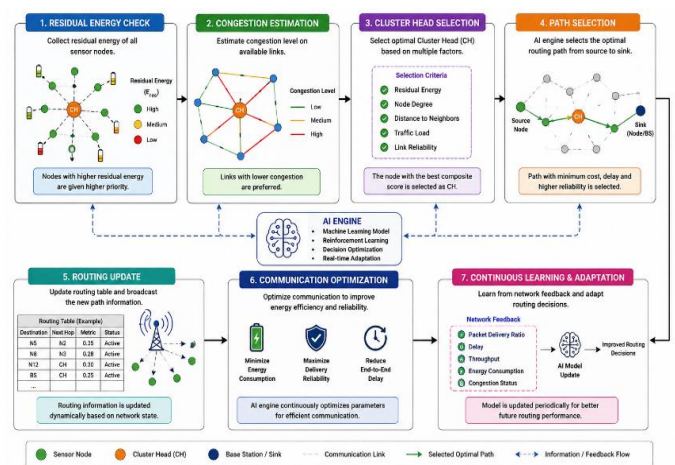


Fig. 2. AI-Assisted Adaptive Routing and Communication Optimization Process in the Intelligent Communication Layer

### 3.5 Cloud and Management Layer

The cloud and management layer are the services that allow monitoring of data and storage in the long term, communication analytics, and optimization of AI models. Past network data and communication statistics are archived to examine and optimize their performance. The cloud layer helps monitor the remote network, update the AI models, manage the security, and implement large-scale data analysis. Cloud and edge intelligence can be integrated to allow next-generation IoT applications to operate with scalability and provide effective management of communication.

#### 4. AI-BASED OPTIMIZATION AND MATHEMATICAL MODELING

Mathematical models had been created to examine the energy usage, communication effectiveness, and network life in the suggested wireless sensor system network configuration.

##### 4.1 Energy Consumption Model

The total energy consumption of a sensor node is expressed as:

$$E_{total} = E_{tx} + E_{rx} + E_{idle} + E_{sleep} \quad (1)$$

where  $E_{tx}$  represents transmission energy,  $E_{rx}$  denotes receiving energy,  $E_{idle}$  corresponds to idle-state energy, and  $E_{sleep}$  represents sleep-mode energy consumption.

##### 4.2 Transmission Energy Model

The transmission energy required for packet communication is represented as:

$$E_{tx}(k, d) = E_{elec} k + \epsilon_{amp} k d^n \quad (2)$$

where  $k$  is packet size,  $d$  is transmission distance,  $E_{elec}$  denotes electronic energy,  $\epsilon_{amp}$  represents amplifier energy, and  $n$  is the path loss exponent.

##### 4.3 Residual Energy Estimation

Residual node energy is calculated using:

$$E_{residual} = E_{initial} - E_{consumed} \quad (3)$$

where  $E_{initial}$  represents initial energy and  $E_{consumed}$  denotes utilized energy. Nodes with higher residual energy are prioritized during routing and cluster head selection.

##### 4.4 Network Lifetime Estimation

Network lifetime is estimated as:

$$NL = \frac{\sum_{i=1}^N E_i}{P_{avg}} \quad (4)$$

where  $N$  is the total number of sensor nodes,  $E_i$  denotes residual node energy, and  $P_{avg}$  represents average power consumption.

#### 4.5 AI-Assisted Routing Strategy

The routing framework that is proposed uses lightweight machine learning-assisted optimization of adaptive choice of communication paths. The AI engine constantly examines the leftover energy, the distance between nodes, the load of traffic, the reliability of the communications, and the likelihood of congestion in order to dynamically optimize routing decisions. This adaptive routing algorithm enhances the efficiency of communication, packet loss, and minimizes communication energy usage without affecting the scalability of IoT in the large-scale context.

#### 5. PROPOSED AI-ASSISTED ENERGY-EFFICIENT ROUTING ALGORITHM

The routing algorithm suggested was aimed to offer smart and energy aware communication in dynamic wireless sensor networks. First, sensor nodes and the network topology would be set up in the sensing environment. Parameters such as delay, congestion and packet delivery ratio which are part of residual energy and communication is continuously monitored as the network is operating. Clustering with AI assistance is then used to identify the best cluster heads, in terms of stability of communication and the energy remaining. Routing analysis with the aid of machine learning determines the stable low-energy communication routes and steers clear of congested routes. Scheduling mechanisms of adaptive sleep are provided to minimize idle energy usage such as transitioning idle nodes into low-power operation mode. The routing tables are constantly changed based on the actual communication conditions in order to ensure efficient and reliable delivery of the data. To maximize the communication reliability, minimize energy use, maximize the network lifetime and maximize the scalability of an IoT-enabled wireless sensor network the optimization process is repeated during the operations of the network.

#### 6. SIMULATION SETUP AND PERFORMANCE EVALUATION

The Intelligent AI-enabled Energy-efficient IoT Communication Architecture was tested through a simulation-based analysis to test its communication efficiency, energy consumption, scalability and routing performance in the IoT-enabled wireless sensor networks. The simulation environment was created to examine how effective AI-supported routing, adaptive clustering, and congestion reduction and energy-conscious communication would be in a volatile network scenario. The framework suggested was executed on NS-3 and MATLAB simulation platforms in

order to simulate an environment of a large-scale wireless sensor networks. Placing of sensor nodes was randomly done in the communication area to create realistic conditions of the IoT monitoring. In the process of the simulation, the proposed architecture constantly measured residual energy, communication delay, performance of packet delivery and network congestion to optimize routing decisions dynamically.

### 6.1 Simulation Parameters

The size of a simulation area was taken as 1000" m The sensor nodes were varied to 100 to 500 to determine scalability with network density. The sensors received 2 Joules of energy to test energy usage and performance in terms of network lifetime. The suggested AI-based routing scheme was utilized as the main means of communication. To simulate continuous communication conditions, a constant bit rate (CBR) traffic and a packet size of 512 Bytes were used. Each node had a fixed communication range of 100 meters in order to create local wireless connections between its neighbors. Table 2 depicts the simulation parameters to be utilized in this study.

Table 2. Simulation Parameters

Parameter	Value
Simulation Area	1000 m × 1000 m
Number of Nodes	100-500
Initial Node Energy	2 J
Communication Protocol	AI-assisted routing
Traffic Type	Constant Bit Rate
Packet Size	512 Bytes
Simulation Tool	NS-3 / MATLAB
Communication Range	100 m

### 6.2 Performance Metrics

A number of performance measures were taken into account to measure the proposed communication framework.

**Energy Consumption:** Energy usage is a measurement that quantifies the communication energy used in the processes of sensing, routing, transmission and reception. Reduced power usage means better communication efficiencies.

**Network Lifetime:** Network lifetime is used to denote the amount of time the network can operate before there is a loss of node energy. This measure is used to determine the efficacy of the suggested energy-conscious routing and sleep scheduling system.

**Packet Delivery Ratio:** Packet Delivery Ratio (PDR) is a ratio of the number of packets that are delivered to those transmitted. An increase in PDR values means a greater reliability of communication.

**Throughput:** Throughput is the successful rate of packet transmission through the network and it is the efficiency of communication at various traffic states.

**End-to-End Delay:** End-to-End Delay is used to measure the communication latency between source and destination nodes. When the delay values are low, it means that there is a higher performance of communication.

**Packet Loss Rate:** Packet Loss rate is a measure of the percentage of packets lost in communication as a result of congestion or a routing failure. Reduced packet loss implies enhanced routing stability and reliability of the network.

Analyses of the obtained simulation results were performed regarding the effectiveness of the suggested AI-assisted communication framework to enhance energy efficiency, routing performance, scalability, and communication reliability of next-generation IoT-enabled wireless sensor networks.

## 7. RESULTS AND DISCUSSION

The simulation findings indicate that the Intelligent AI-Enabled Energy-Efficient IoT Communication Architecture is much more efficient in communication, energy consumption, and routing performance in comparison with traditional wireless sensor network routing protocols. The framework has been tested at different network densities, as well as in different circumstances of dynamic traffic, to evaluate its scalability and ability to sustain communication in the large-scale settings of IoT-enabled network-based environment. The combination of AI-assisted adaptive routing and intelligent cluster management significantly minimized communication overhead through reduction of redundant packet transmission and allocation of communication load between sensor nodes. In contrast to the traditional methods of routing that were usually static, the given framework introduced a dynamic update of communication routes based on the remaining energy, traffic congestion, and communication quality. Such a routing mechanism increased stability of networks and minimized excessive energy depletion of over-utilized communication nodes. The results of the simulation analysis also indicated that the implementation of edge-assisted processing was effective to reduce unwarranted cloud communications and enhance real-time traffic control. Localized packet filtering and data aggregation at edge nodes reduced bandwidth usage as well as communication latency. The adaptive sleep scheduling processes also contributed significantly to lowering the idle state energy use by putting inactive sensor nodes in the low-power operation mode.

### 7.1 Energy Consumption Analysis

The proposed architecture also exhibited much reduced energy usage as opposed to traditional routing protocols like LEACH and PEGASIS. The AI-assisted routing system continually chose low-energy

communication routes and eliminated unnecessary retransmit due to network congestion and unstable routing paths. The intelligent cluster head selection algorithm spread out communication load effectively among sensor nodes, and hence, decreased the sudden energy loss in single sensor nodes. The density of the network, in terms of nodes, rose to 500 but the suggested framework ensured a stable energy consumption through dynamic communication scheduling and edge-based traffic optimization.

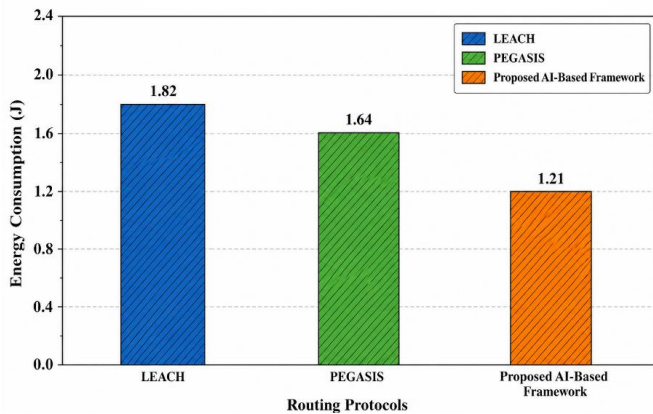


Fig. 3. Energy Consumption Comparison

Table 3. Comparative Energy Consumption Analysis

Protocol	Average Energy Consumption (J)
LEACH	1.82
PEGASIS	1.64
Proposed AI-Based Framework	1.21

The results obtained show that the proposed framework consumed less energy on communication compared to the current methods, hence enhancing sustainability of the whole network.

### 7.3 Ratio Analysis of Packet Delivery

Packet Delivery Ratio (PDR) was used in order to measure the reliability of communication in different traffic conditions. The routing framework proposed with the help of AI had a better packet delivery performance with the ability to optimize the route changes and manage congestion based on communication with other nodes.

Table 4. Packet Delivery Ratio Comparison

Protocol	Packet Delivery Ratio (%)
LEACH	88.4
PEGASIS	90.1
Proposed AI-Based Framework	96.8

The enhanced PDR demonstrates that the suggested framework was effective to reduce the loss of packets and ensure stable communication in the conditions of high network traffic.

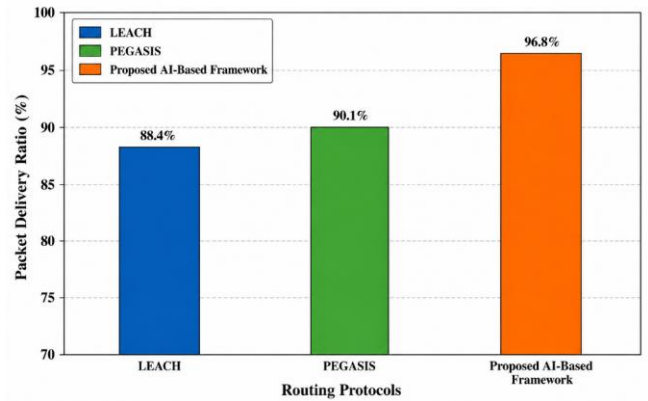


Fig. 4. Packet Delivery Ratio Comparison

### 7.3 Throughput Performance

The performance of the proposed framework in throughput was notably better as compared to traditional routing methods because of smart traffic allocation and adaptive communication timing.

Table 5. Throughput Comparison

Protocol	Throughput (kbps)
LEACH	215
PEGASIS	238
Proposed AI-Based Framework	312

The throughput improvement shows that AI-enhanced routing mechanism can be effective in contributing to efficient transmission of data in large-scale IoT settings.

### 7.4 End-to-End Delay Analysis

The framework proposed gained a reduced communication latency by selecting intelligent routes and using local processing with the aid of the edge. The intelligence edge layer minimized unneeded cloud dependency as well as quickened communication choices.

Table 6. End-to-End Delay Comparison

Protocol	End-to-End Delay (ms)
LEACH	145
PEGASIS	132
Proposed AI-Based Framework	94

The performance improvement in real-time communication by adaptive routing and localized communication optimization is also validated by the reduced delay.

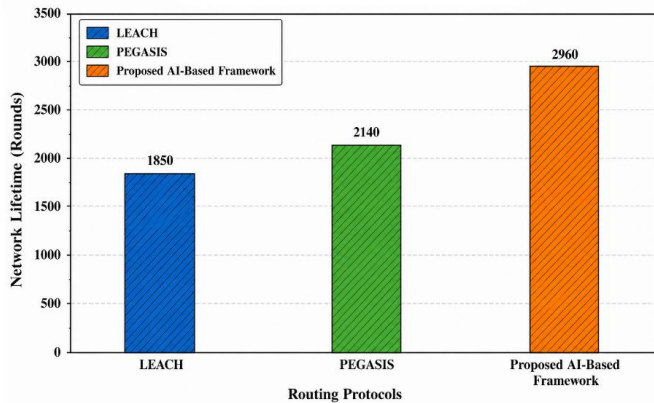
### 7.5 Network Lifetime Analysis

The suggested architecture showed better network lifetime as a result of energy-aware routing and dynamic sleep-scheduling schemes. The sensor nodes had longer runs since the load of communication was intelligently distributed across the network.

**Table 7. Network Lifetime Comparison**

Protocol	Network Lifetime (Rounds)
LEACH	1850
PEGASIS	2140
Proposed AI-Based Framework	2960

The findings indicate clearly that the framework proposed had a considerable lifetime on the network in comparison to conventional communication protocols.



**Fig. 5. Network Lifetime Analysis**

### 7.6 Discussion

The overall performance analysis proves that the suggested AI-enabled communication architecture offers an excellent communication performance, scalability, and energy optimization over the conventional WSN routing protocols. The combination of AI-assisted adaptive routing, smart clustering, edge-assisted processing, and smart sleep scheduling received the framework to ensure the stable communication performance despite the dynamic network conditions. The proposed framework had better adaptability and less communication overhead compared to the previous works based on constant routing and the traditional clustering methods. Current protocols like LEACH and PEGASIS are mostly energy efficient communication protocols, but do not have real-time adaptive routing functionality and smart congestion management. Conversely, the proposed AI-aided communication system makes routing decisions constantly based on the varying network conditions, thus enhancing the reliability of communication and minimising the number of packets lost. The edge-assisted communication model also increased scalability by ensuring that there was minimal redundant cloud communication and a lowered communication latency. The effectiveness of the proposed architecture is thus confirmed by the simulation of the next generation IoT-enabled wireless sensor network application such as smart cities, industrial automation, healthcare monitoring, environmental sensing and intelligent transportation systems.

### CONCLUSION

In this article, the Intelligent AI-based Energy-efficient IoT Communication Architecture of the next generation wireless sensor networks was introduced. The framework offered combined AI-based adaptive routing, intelligent clustering, edge-assisted processing, and adaptive sleep scheduling to optimize communications and minimize energy wastes in IoT-based WSN settings. The suggested architecture was successful in dealing with significant issues related to traditional WSN communication systems such as wasteful energy consumption, communication overhead, congestion, routing instability, and scalability issues. Combining lightweight AI-assisted routing and edge intelligence allowed the optimization of communications dynamically and offered greater network resilience to fluctuating network conditions. Simulation experiments have shown that the proposed framework consumed less power, had a better packet delivery rate, better throughput, less communication delay and longer network lifetime than the conventional routing protocols like LEACH and PEGASIS. Load balancing and stability of the communication was also enhanced by the adaptive communication and smart cluster management systems. The framework suggested is a scalable and intelligent communication system that can be used in smart cities, industrial IoT, healthcare monitoring, environmental sensing, and autonomous wireless communication system in the future. Further use in the future could be to combine federated learning, blockchain-enhanced security, UAV-enhanced communication, and 6G-enabled intelligent networking technologies to achieve better communication efficiency, security, and scalability in further IoT-enabled wireless sensor networks.

### REFERENCES

1. C. Corches, M. Daraban, O. Stan, S. Enyedi, and L. Miclea, "Interconnection of systems with cloud-fog-edge architectures: Concept and challenges," *Journal of Control Engineering and Applied Informatics*, vol. 23, no. 1, pp. 60-71, 2021.
2. R. Dogra, S. Rani, and G. Gianini, "REERP: A region-based energy-efficient routing protocol for IoT wireless sensor networks," *Energies*, vol. 16, no. 17, p. 6248, 2023.
3. A. R. Gaidhani and A. D. Potgantwar, "A review of machine learning-based routing protocols for wireless sensor network lifetime," *Engineering Proceedings*, vol. 59, p. 231, 2024.
4. T. Kim, L. F. Vecchiotti, K. Choi, S. Lee, and D. Har, "Machine learning for advanced wireless sensor networks: A review," *IEEE Sensors Journal*, vol. 21, no. 11, pp. 12379-12397, 2020.
5. J. Lin, W. Yu, N. Zhang, X. Yang, H. Zhang, and W. Zhao, "A survey on internet of things: Architecture, enabling technologies, security and privacy, and applications,"

- IEEE Internet of Things Journal*, vol. 4, no. 5, pp. 1125-1142, 2017.
6. Z. Mammeri, "Reinforcement learning based routing in networks: Review and classification of approaches," *IEEE Access*, vol. 7, pp. 55916-55950, 2019.
  7. N. Moussa, S. Khemiri-Kallel, and A. El Belrhiti El Alaoui, "Fog-assisted hierarchical data routing strategy for IoT-enabled WSN: Forest fire detection," *Peer-to-Peer Networking and Applications*, vol. 15, no. 5, pp. 2307-2325, 2022.
  8. V. K. Mutombo, S. Lee, J. Lee, and J. Hong, "EER-RL: Energy-efficient routing based on reinforcement learning," *Mobile Information Systems*, vol. 2021, pp. 1-15, 2021.
  9. S. S. S. Paulraj and T. Deepa, "Energy-efficient data routing using neuro-fuzzy based data routing mechanism for IoT-enabled WSNs," *Scientific Reports*, vol. 14, no. 1, p. 30081, 2024.
  10. R. Priyadarshi, "Exploring machine learning solutions for overcoming challenges in IoT-based wireless sensor network routing: A comprehensive review," *Wireless Networks*, vol. 30, no. 5, pp. 2647-2673, 2024.
  11. R. Priyadarshi, R. R. Kumar, R. Ranjan, and P. V. Kumar, "AI-based routing algorithms improve energy efficiency, latency, and data reliability in wireless sensor networks," *Scientific Reports*, vol. 15, no. 1, p. 22292, 2025.
  12. B. Prince, P. Kumar, and S. K. Singh, "Multi-level clustering and prediction based energy efficient routing protocol to eliminate hotspot problem in wireless sensor networks," *Scientific Reports*, vol. 15, no. 1, p. 1122, 2025.
  13. M. Rajput and R. N. Yadav, "Machine and deep learning driven energy efficient clustering in IoT-WSNs: A review," *IEEE Sensors Journal*, vol. 25, no. 7, pp. 39371-39385, 2025.
  14. P. P. Ray, "A survey on Internet of Things architectures," *Journal of King Saud University-Computer and Information Sciences*, vol. 30, no. 3, pp. 291-319, 2018.
  15. A. Rancea, I. Anghel, and T. Cioara, "Edge computing in healthcare: Innovations, opportunities, and challenges," *Future Internet*, vol. 16, no. 9, p. 329, 2024.
  16. Z. Sun, L. Wei, C. Xu, T. Wang, Y. Nie, X. Xing, and J. Lu, "An energy-efficient cross-layer-sensing clustering method based on intelligent fog computing in WSNs," *IEEE Access*, vol. 7, pp. 144165-144177, 2019.
  17. M. A. Tawfeek, I. Alrashdi, M. Alruwailiet *et al.*, "Improving energy efficiency and routing reliability in wireless sensor networks using modified ant colony optimization," *EURASIP Journal on Wireless Communications and Networking*, vol. 2025, no. 1, p. 22, 2025.